



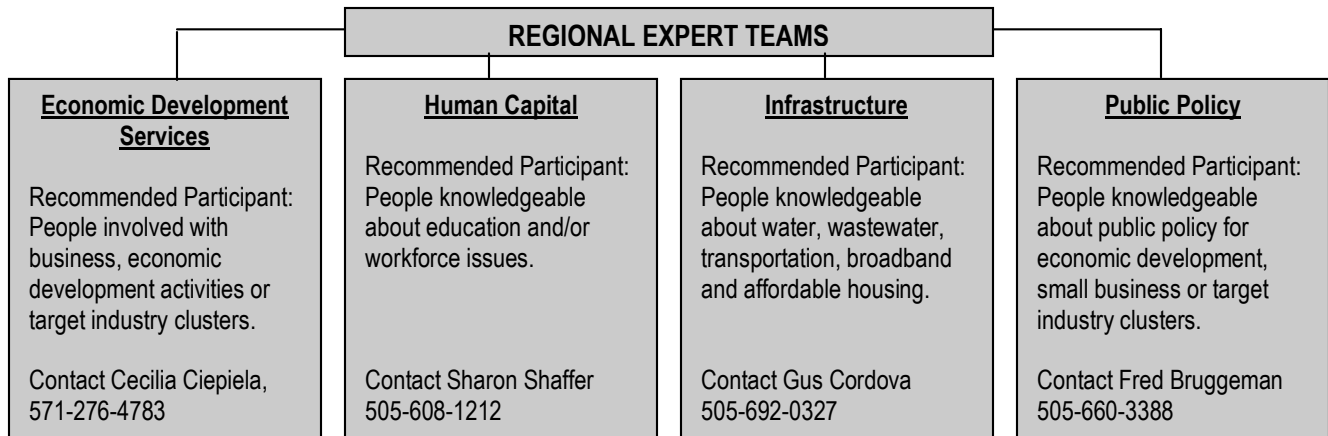
Background. Northern NM REDI (Regional Economic Development Initiative) is one of Los Alamos County's *Progress through Partnering* initiatives, funded by increased gross receipts tax revenue from the change in Los Alamos National Laboratory's contractor status. REDI's geographic area includes Los Alamos, Rio Arriba, Santa Fe and Taos counties. Through a Regional Economic Development Strategic Plan, REDI will identify and begin to implement concrete economic development projects that will improve the economy and quality of life in the four-county region over the next 25 years.

Regional Needs and Goals. In December 2007 and January 2008, the REDI Project Team met with over 60 stakeholders in the region, including local governments, tribal governments, institutions of higher education, chambers of commerce, economic development organizations, school districts, major private sector entities, state and federal agencies. Based on input from stakeholders and data analysis, we identified five core regional needs and corresponding goals, which guide the REDI process.

<u>Regional Needs</u>		<u>REDI Goals</u>
1. NM, and northern NM in particular, are overly dependent on government jobs and investment.	→	1. Diversify the economy.
2. NM has some of the lowest educational indicators in the US, and rural schools typically lag behind.	→	2. Develop a high-quality workforce.
3. Taos and Rio Arriba counties have very low incomes and high poverty rates.	→	3. Increase the number of higher-paying jobs.
4. Northern NM suffers from "brain drain" of its best and brightest, who move away for better economic opportunities and lower costs of living.	→	4. Retain and attract youth and families.
5. BBER is projecting a substantial shift in NM's population to the urban areas.	→	5. Make rural communities vibrant.

Strategic Areas and Regional Expert Teams. Based on our goals and the analysis of regional needs, described in more detail in the *Regional Needs Report* at www.nnmredi.org, REDI will focus on four strategic areas in the next 1-5 years. The four areas—Economic Development Services, Human Capital, Physical Infrastructure and Public Policy, are the building blocks for successful economic development in the region.

In June and July 2008, REDI will convene Regional Expert Teams around the four strategic areas. The teams will meet for a finite, two month period to identify specific economic development initiatives and projects, and to create implementation plans. We are currently soliciting your participation on the Regional Expert Teams. Agendas which describe the scope of work for each team can be found at www.nnmredi.org beginning on May 21, 2008. You are welcome to contact the team leaders anytime before May 30 to participate on a Regional Expert Team.



Industry Clusters and the May Day Consensus. From the stakeholder meetings, we identified 10 industry clusters that are established or emerging in different parts of the region. At the May Day Consensus event on May 1, 2008, regional stakeholders participated in a prioritization exercise to identify target industry clusters for the region. Target industry clusters are: Renewable Energy/Green Industry, Technology, Value-Added Agriculture and Entertainment. Through our four strategic areas, REDI will assist in developing coordinated economic development services, human capital, infrastructure and public policy to support and develop target industry clusters. For a more detailed description of all ten industry clusters, please see the *Industry Clusters Report* at www.nnmredi.org.

What's Ahead? In July and August 2008, REDI will develop a funding and political strategy for the economic development initiatives and projects identified by the Regional Expert Teams. A draft Regional Economic Development Strategic Plan will be developed in August, and stakeholder input will be solicited on the draft in September. REDI will host a final event in late September to obtain consensus on the Regional Economic Development Strategic Plan from all stakeholders.

For more information, contact:

Monica Abeita, REDI Project Manager, Regional Development Corporation, 505-241-9196, mabeita@rdcnm.org